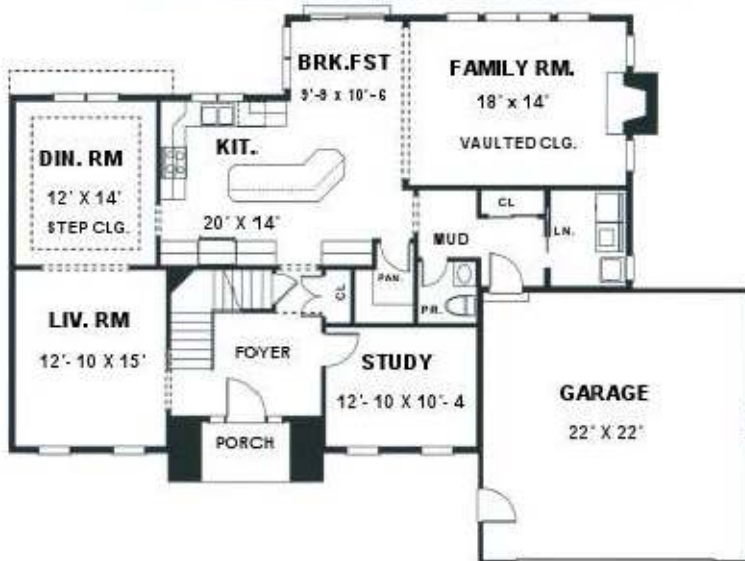


# CARINI ENGINEERING DESIGNS P.C

1387 FAIRPORT ROAD, SUITE 560  
FAIRPORT, N.Y 14450



**FIRST FLOOR**  
AREA: 1447 SQ. FT.

COPYRIGHT © 1994  
CARINI ENGINEERING DESIGNS, P.C.

**CARINI**  
ENGINEERING  
DESIGNS P.C.

---

PLAN NO.  
**DS 2351**



**SECOND FLOOR**  
AREA: 1053 SQ. FT.

- ◆ **TOTAL AREA: 2500 SQ.FT**
- ◆ 2 STORY FOYER
- ◆ 2 1/2 BATHS
- ◆ 1ST. FLOOR LAUNDRY RM.
- ◆ VAULTED FAMILY RM.
- ◆ BIG KITCHEN OPEN TO BREAKFAST
- ◆ DINING RM. WITH STEP CLG.
- ◆ LIVING RM. OPEN TO DINING ROOM
- ◆ 4 BEDROOMS UP
- ◆ LARGE MASTER SUITE
- ◆ W.P TUB WITH SHOWER
- ◆ LARGE WALK IN CLOSET
- ◆ SPLIT MAIN BATH
- ◆ 59'- 8" WIDE
- ◆ 44'- 6" DEEP
- ◆ 9' CEILING HGT.(1ST.FLR.)
- ◆ 8' CEILING HGT. (2ND.FLR.)