

CARINI ENGINEERING DESIGNS P.C

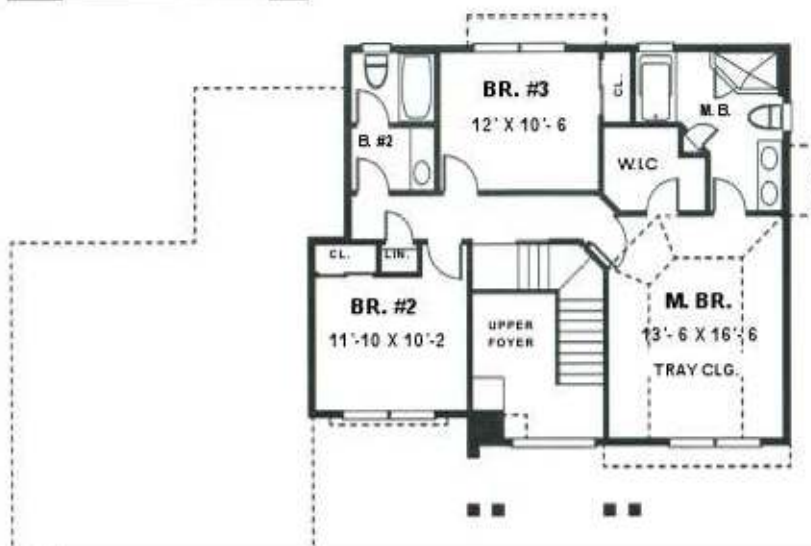
1387 FAIRPORT ROAD, SUITE 560
FAIRPORT, N.Y 14450



COPYRIGHT © 1996
CARINI ENGINEERING DESIGNS, P.C.

CARINI
ENGINEERING
DESIGNS P.C.

PLAN NO.
DS 2368 3BR.



- ◆ **TOTAL AREA: 1898 SQ.FT**
- ◆ 2 STORY FOYER
- ◆ 2 1/2 BATHS
- ◆ 1ST. FLOOR LAUNDRY RM.
- ◆ LARGE FAMILY RM.
- ◆ LIVING RM.
- ◆ BIG KITCHEN OPEN TO BREAKFAST
- ◆ WORK ISLAND
- ◆ 3 BEDROOMS UP
- ◆ LARGE MASTER SUITE WITH TRAY CLG.
- ◆ SOAKING TUB WITH SHOWER
- ◆ WALK IN CLOSET
- ◆ DOUBLE VANITY
- ◆ 56'-8" WIDE
- ◆ 38'-4" DEEP
- ◆ 9' CEILING HGT.(1ST.FLR.)
- ◆ 8' CEILING HGT. (2ND.FLR.)