

CARINI ENGINEERING DESIGNS P.C

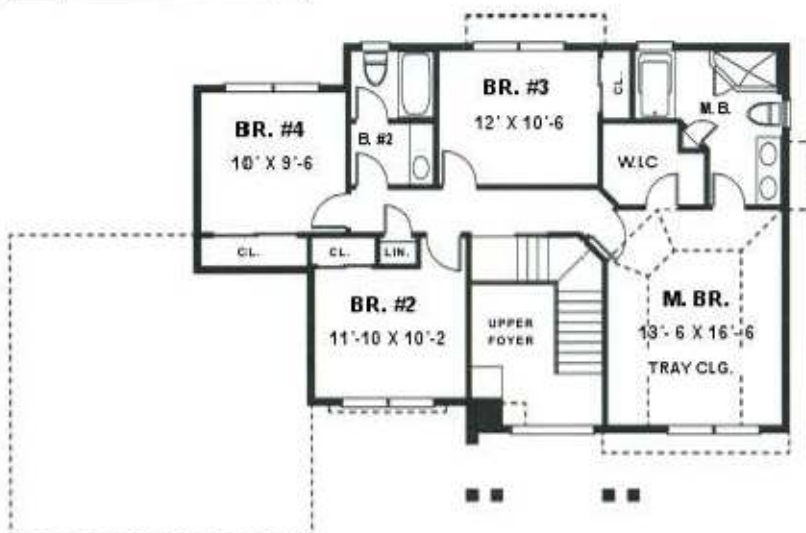
1387 FAIRPORT ROAD, SUITE 560
FAIRPORT, N.Y 14450



COPYRIGHT © 1996
CARINI ENGINEERING DESIGNS, P.C.

CARINI
ENGINEERING
DESIGNS P.C.

PLAN NO.
DS 2368-4BR.



- ◆ **TOTAL AREA: 2039 SQ.FT**
- ◆ 2 STORY FOYER
- ◆ 2 1/2 BATHS
- ◆ 1ST. FLOOR LAUNDRY RM.
- ◆ LARGE FAMILY RM.
- ◆ LIVING RM.
- ◆ BIG KITCHEN OPEN TO BREAKFAST
- ◆ 4 BEDROOMS UP
- ◆ LARGE MASTER SUITE WITH TRAY CLG.
- ◆ SOAKING TUB WITH SHOWER
- ◆ WALK IN CLOSET
- ◆ DOUBLE VANITY
- ◆ **56'- 8" WIDE**
- ◆ **38'- 4" DEEP**
- ◆ **9' CEILING HGT.(1ST.FLR.)**
- ◆ **8' CEILING HGT. (2ND.FLR.)**