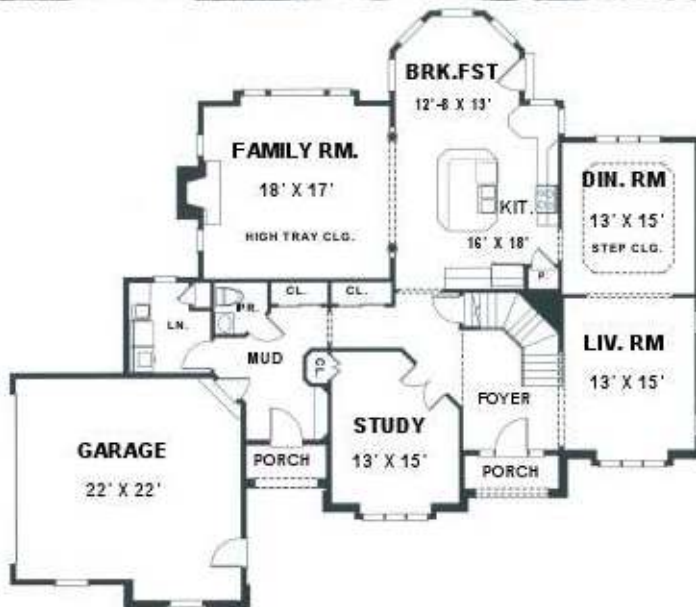


CARINI ENGINEERING DESIGNS P.C

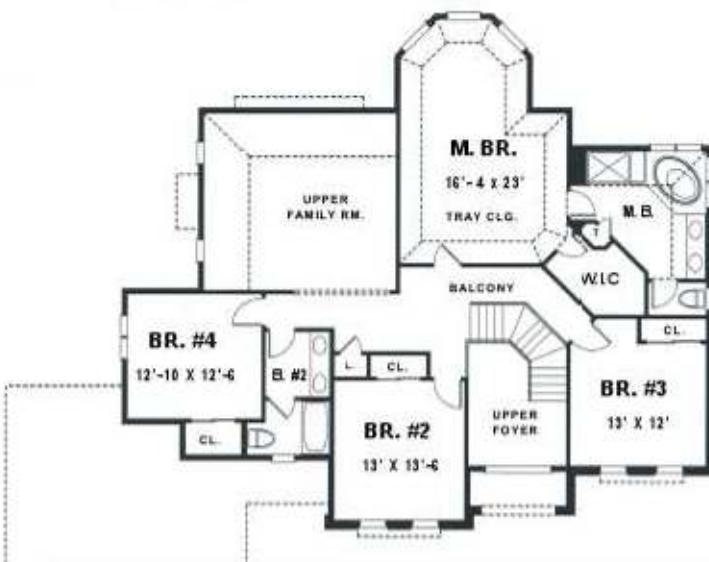
1387 FAIRPORT ROAD, SUITE 560
FAIRPORT, N.Y 14450



FIRST FLOOR
AREA: 1749 SQ. FT.

COPYRIGHT © 1996
CARINI ENGINEERING DESIGNS, P.C.

<p>CARINI ENGINEERING DESIGNS P.C.</p> <hr/> <p>PLAN NO. DS 2388</p>
--



SECOND FLOOR
AREA: 1337 SQ. FT.

- ◆ **TOTAL AREA: 3086 SQ.FT**
- ◆ 2 STORY FOYER
- ◆ 2 1/2 BATHS
- ◆ 1ST. FLOOR LAUNDRY RM.
- ◆ HIGH TRAY CLG. IN FAMILY RM.
- ◆ STUDY
- ◆ KITCHEN OPEN TO BREAKFAST
- ◆ WORK ISLAND
- ◆ DINING RM. WITH STEP CLG.
- ◆ FORMAL LIVING RM.
- ◆ 4 BEDROOMS UP
- ◆ LARGE MASTER SUITE WITH TRAY CLG.
- ◆ WHIRLPOOL TUB WITH SHOWER
- ◆ WALK IN CLOSET
- ◆ DOUBLE VANITY
- ◆ SPLIT MAIN BATH
- ◆ 64'-8" WIDE
- ◆ 56'-2" DEEP
- ◆ 9' CEILING HGT.(1ST.FLR.)
- ◆ 8' CEILING HGT.(2ND.FLR.)