

CARINI ENGINEERING DESIGNS P.C

1387 FAIRPORT ROAD, SUITE 560
FAIRPORT, N.Y 14450



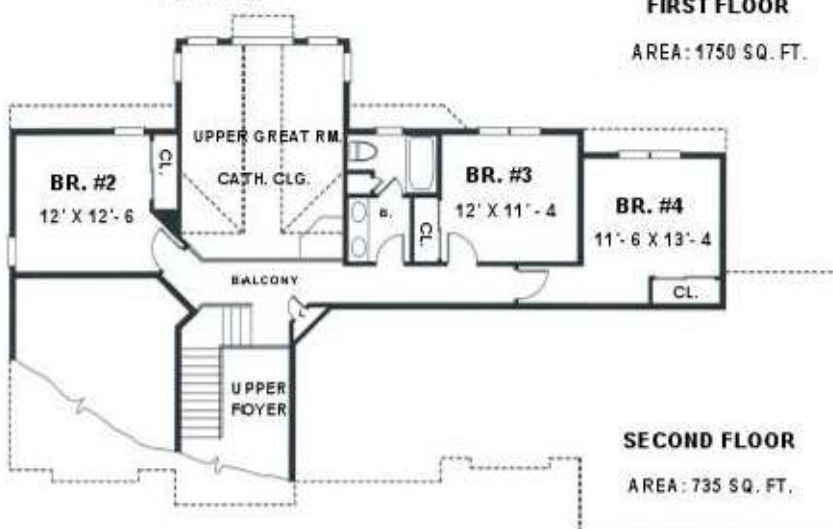
8/24/99/561 1/99

COPYRIGHT © 1996
CARINI ENGINEERING DESIGNS, P.C.



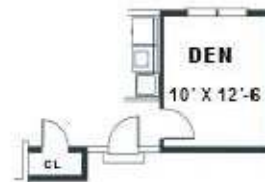
FIRST FLOOR

AREA: 1750 SQ. FT.



SECOND FLOOR

AREA: 735 SQ. FT.



OPTIONAL DEN

ADD. AREA: 267 SQ. FT.

CARINI
ENGINEERING
DESIGNS P.C.

PLAN NO.
DS 2391

- ◆ **TOTAL AREA: 2485 SQ.FT**
- ◆ VAULT. CLG. IN FOYER
- ◆ 2 1/2 BATHS
- ◆ 1ST. FLOOR MASTER SUITE
- ◆ LARGE GREAT RM.
- ◆ DINING RM. WITH STEP CLG.
- ◆ KITCHEN OPEN TO BREAKFAST
- ◆ CATH. CLG. IN LIVING RM.
- ◆ 3 BEDROOMS UP
- ◆ LARGE MASTER SUITE WITH TRAY CLG.
- ◆ WHIRLPOOL TUB WITH SHOWER
- ◆ WALK IN CLOSET
- ◆ LARGE SHOWER
- ◆ DOUBLE VANITY
- ◆ BONUS RM. (298 SQ.FT. ADD.)
- ◆ **70'- 0" WIDE**
- ◆ **44'- 0" DEEP**
- ◆ **9' CEILING HGT.(1ST.FLR.)**
- ◆ **8' CEILING HGT.(2ND.FLR.)**